

Prospectus for

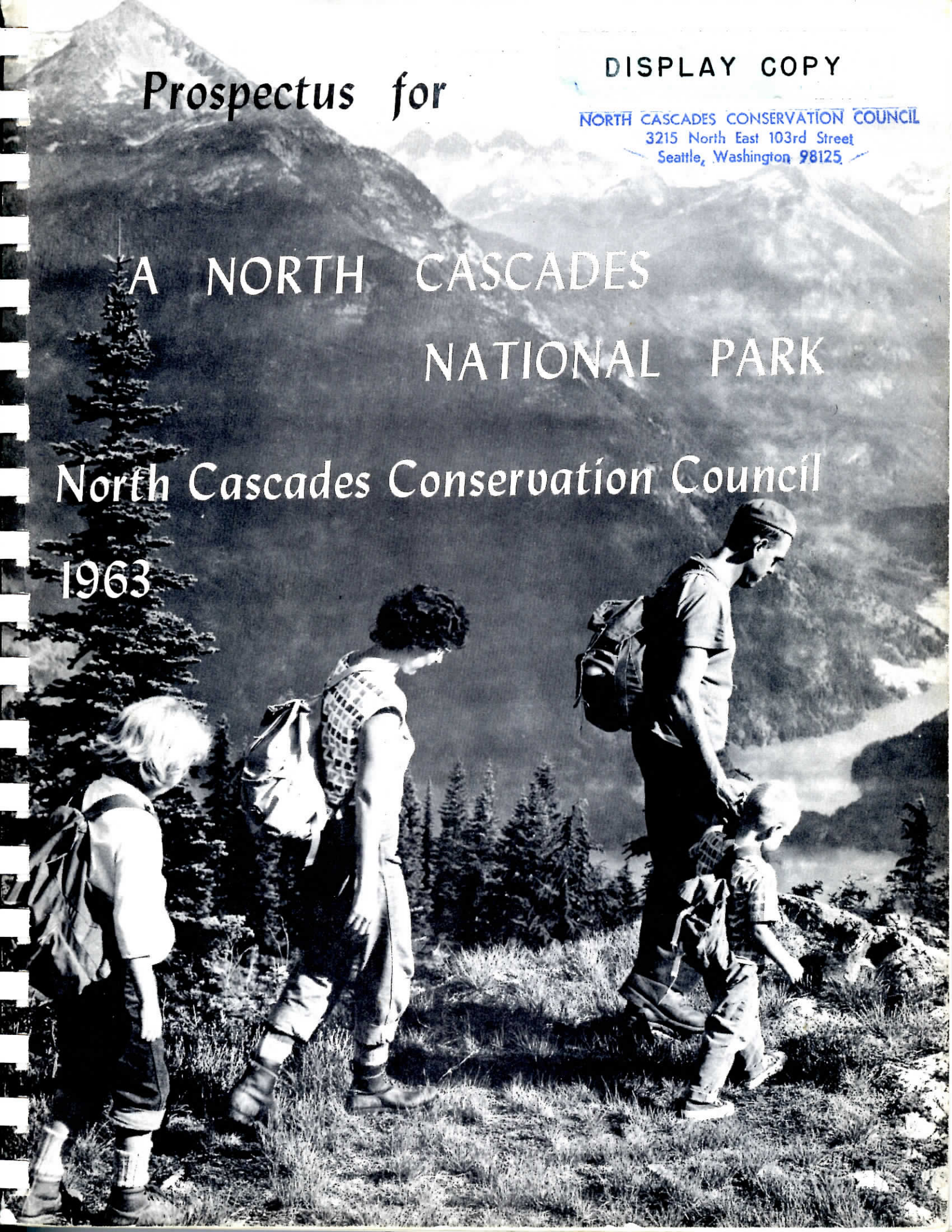
DISPLAY COPY

NORTH CASCADES CONSERVATION COUNCIL
3215 North East 103rd Street
Seattle, Washington 98125

A NORTH CASCADES
NATIONAL PARK

North Cascades Conservation Council

1963



Please return to →

FOR DISPLAY BY
NORTH CASCADES CONSERVATION COUNCIL
3215 North East 103rd Street
Seattle 5, Washington 98125

PROSPECTUS

for

A NORTH CASCADES NATIONAL PARK

Edited by

J. Michael McCloskey

Northwest Conservation Representative

for

North Cascades Conservation Council

3215 North East 103rd Street

Seattle, Washington 98125

1963

P R O S P E C T U S

for

A NORTH CASCADES NATIONAL PARK

- PART I The National Park Quality of the North Cascades: A Description of the Scenic and Natural Features of the Area
Charles D. Hessey, Jr.
- PART II The Unsatisfactory Nature of Present Management: An Explanation of the Inadequacies of Forest Service Administration
Patrick D. Goldsworthy
- PART III The Superiority of National Park Service Management: A Preview of the Benefits that Park Service Administration Will Bring
John F. Warth
- PART IV Legislation Proposed to Create a North Cascades National Park: A Presentation and Explanation of the Specific Statute Proposed
J. Michael McCloskey
- PART V The Economic Impact of a North Cascades National Park: An Analysis of the Effect of a Park on Commodity Industries and a Projection of the Expansion of the Tourist Industry
J. Michael McCloskey

A
SAMPLING
OF REPRESENTATIVE SCENES
FROM THE AREA OF THE PROPOSED
NORTH CASCADES NATIONAL PARK

Cover: Looking up Thunder Creek valley toward the heart of the proposed North Cascades National Park from Sourdough Mountain. Photo by Bob and Ira Spring.



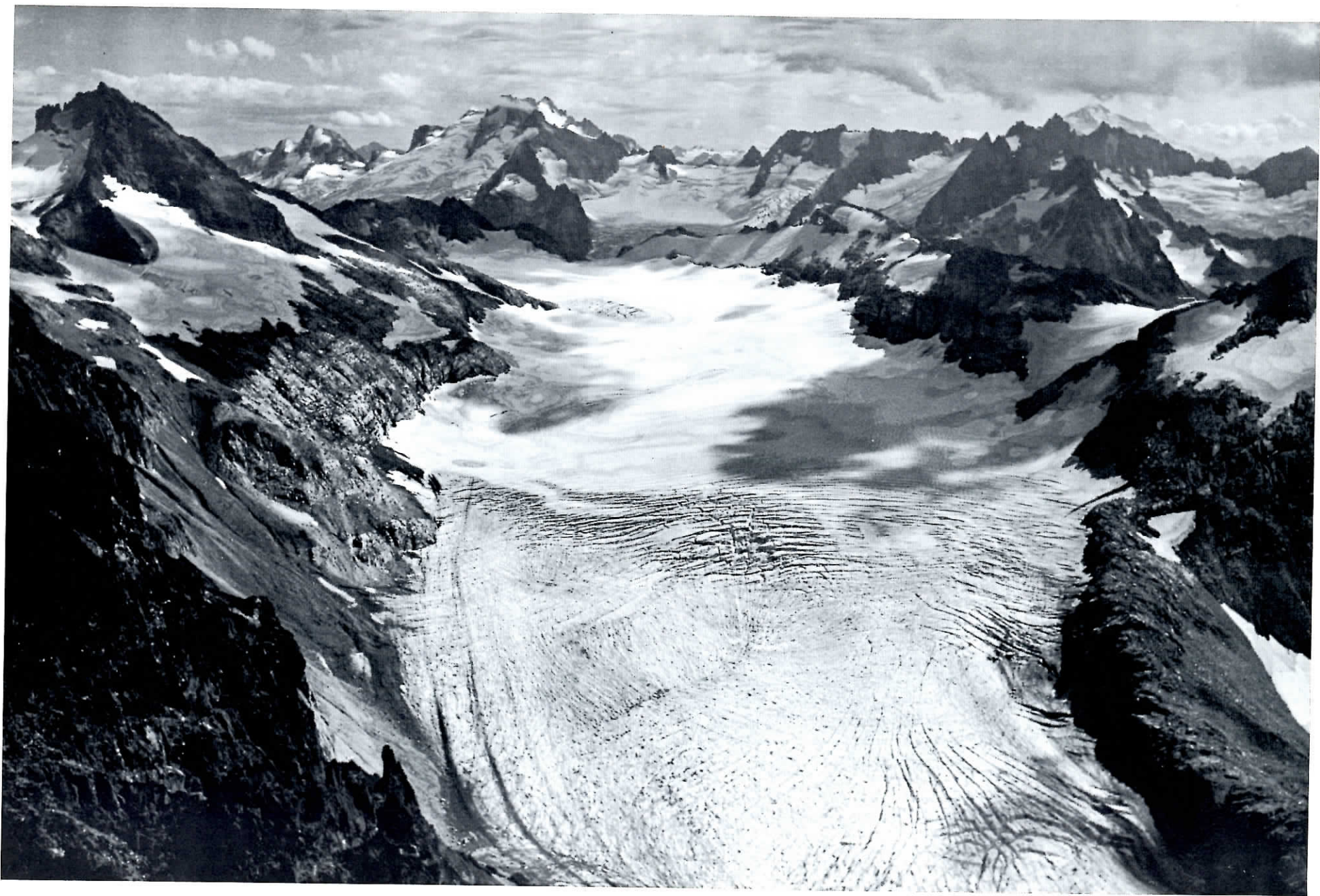
Trail near the Sauk River

Photo by David Simons



Glacier Peak from Image Lake

Photo by John Warth



Dome Peak and South Cascade Glacier from Le Conte Mt.

Photo by Ed Dolan



Napeequa valley

Photo by John Warth



Le Conte Glacier from Serene Lake

Photo by Ed Dolan



Lake Chelan from above Stehekin, looking south toward Railroad Creek and the Chelan Mountains.

Photo by John Warth



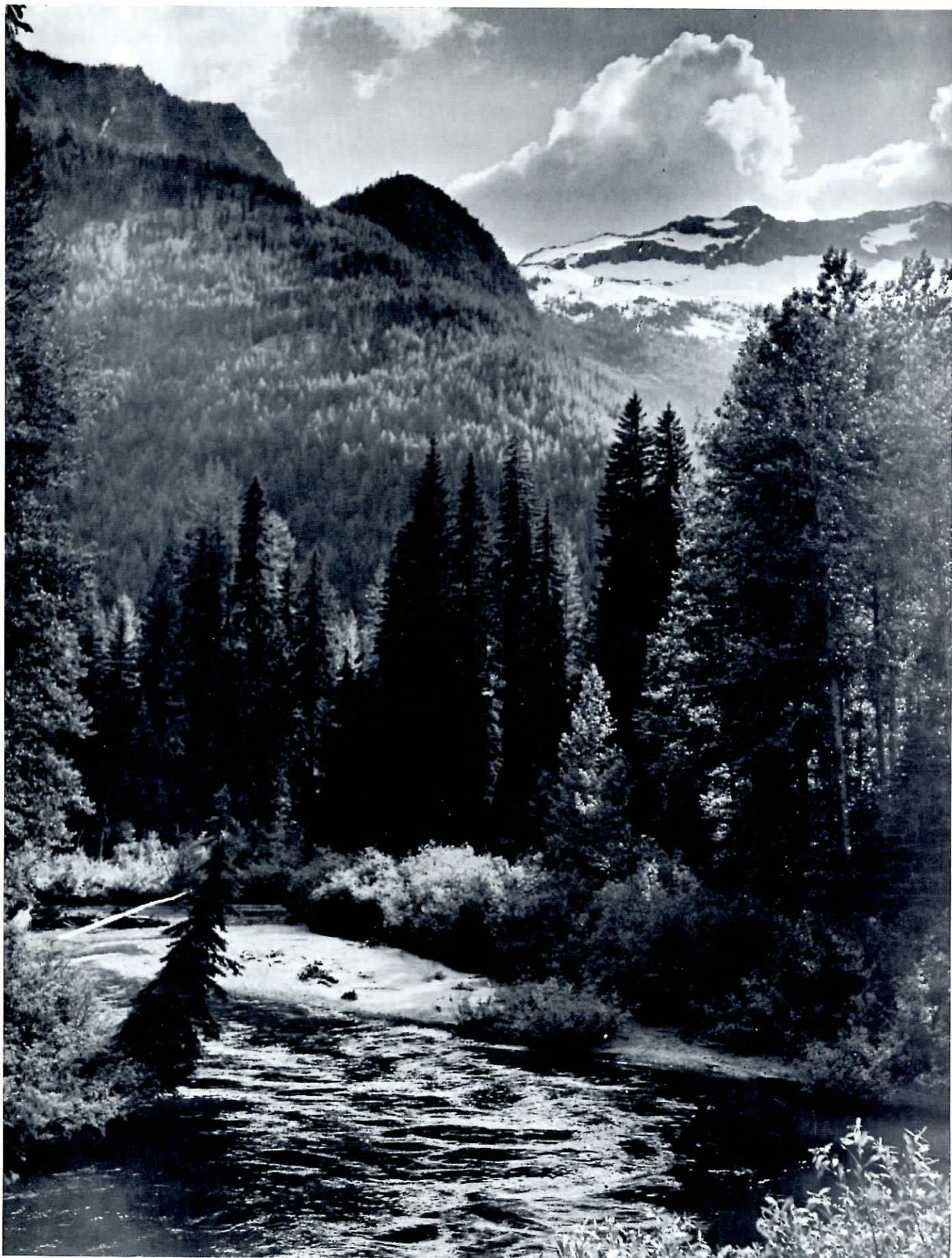
Mountain Goat

Photo by John Warth



Mt. Clark from the Napeequa valley on the east.

Photo by John Warth



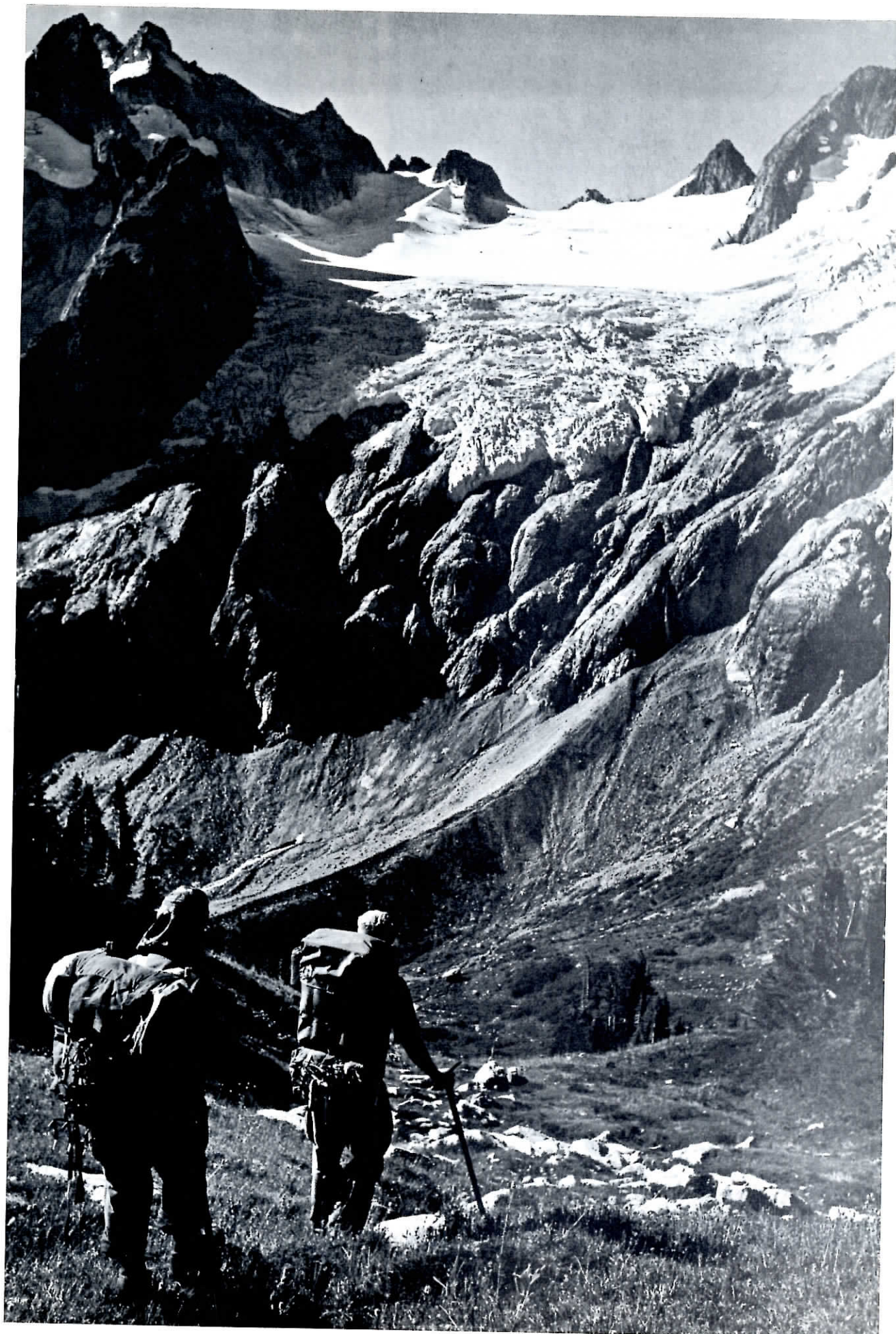
Chiwawa valley and river from below Estes Butte

Photo by John Warth



Louis Creek Falls from the Napeequa valley

Photo by John Warth



Dana Glacier and Dome Peak on the west fork of Agnes Creek

Photo by Ed Dolan



Needle Peak from Upper Swamp Creek basin



Sub-peak of Mt. Clark and Napeequa valley



Tenpeak Mountain, Honeycomb Glacier, and the headwaters of the Suiattle River from Flower Dome.



Mt. Johannesburg from near Cascade Pass

Logging Moving into the Park Area

Clear cutting on Coal Creek, off the South Fork of the Stillaguamish River just outside of the proposed park. Photo from Mt. Dickerman, inside the proposed park, toward the Three Fingers.



Cutting up the Cascade River toward Eldorado



Clear cut along Marble Creek near the Foot of Eldorado Peak